



# MONTHLY MEMBERSHIP PROGRESS REPORT

Results as of: 4/30/2015

Multiple District 8

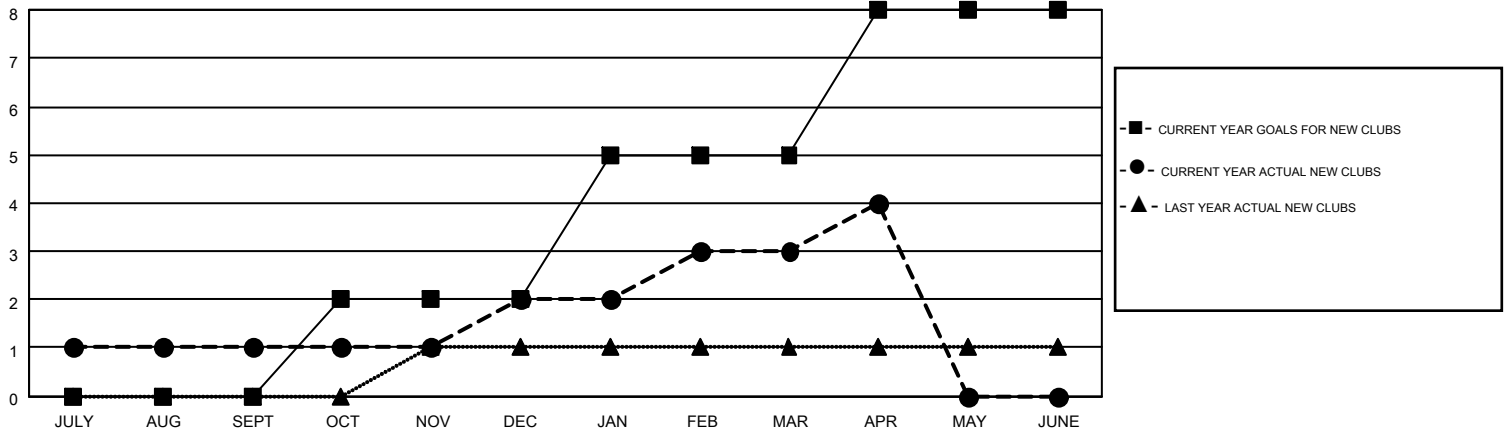
LOCATION: LOUISIANA

GMT: HAL GRIFFIN

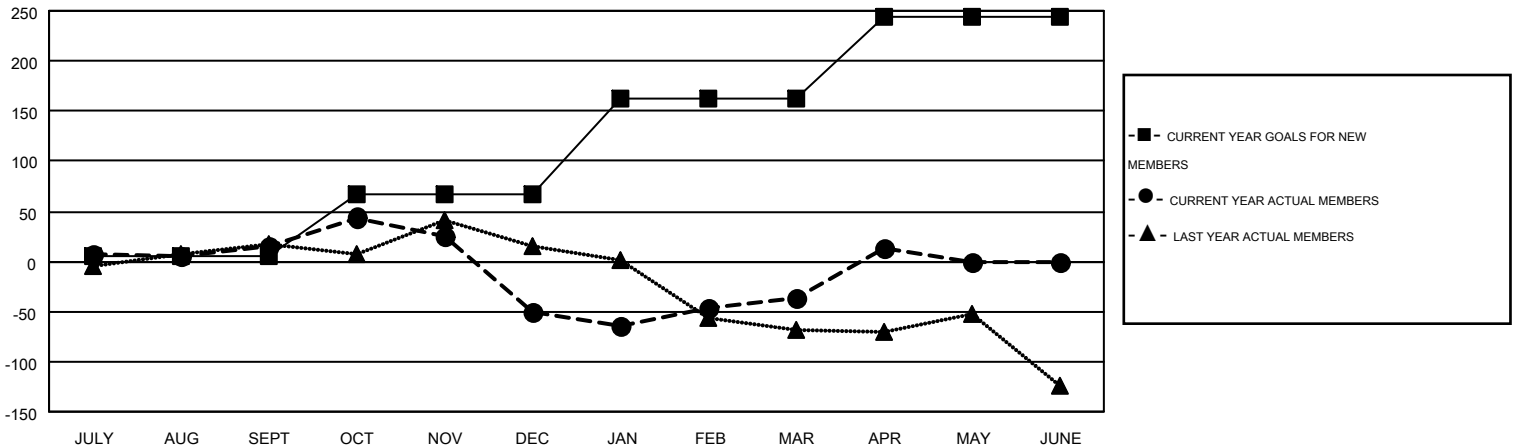
GMT CA 1

Clubs					Members				
RESULTS FOR 2014-2015					RESULTS FOR 2014-2015				
QUARTER	NEW CLUB GOAL	NEW CLUBS	DROPPED CLUBS	NET GAIN/LOSS	QUARTER	NEW MEMBER GOAL	CHARTER AND NEW MEMBERS ADDED	DROPPED MEMBERS	NET GAIN/LOSS
JULY/AUG/SEPT	0	1	1	0	JULY/AUG/SEPT	6	198	183	15
OCT/NOV/DEC	2	1	4	-3	OCT/NOV/DEC	61	135	200	-65
JAN/FEB/MAR	3	1	2	-1	JAN/FEB/MAR	96	168	155	13
APR/MAY/JUNE	3	1	0	1	APR/MAY/JUNE	81	89	38	51

GOALS AND ACTUAL NEW CLUBS CUMULATIVE



GOALS AND ACTUAL MEMBERS CUMULATIVE



DROPPED CLUBS: 7	107 CLUBS OF 167 ADDED 1 OR MORE NEW MEMBERS	<u>GENDER DISTRIBUTION</u>	
<u>DROPPED MEMBERS</u>		MALE	3,244 (70.19%)
DECEASED	74	FEMALE	1,378 (29.81%)
CLUB CANCELLED	44	<a href="#">CLICK HERE FOR HEALTH ASSESSMENT DATA</a>	
OTHER	458	FAMILY UNIT MEMBERS	776
TOTAL	576	HEAD OF HOUSEHOLD	370
		NON-HEAD OF HOUSEHOLD	406